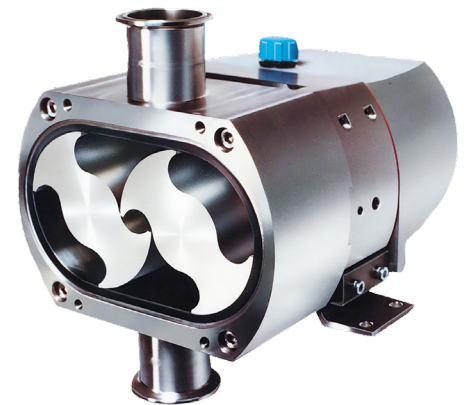


PACKO LOBE PUMPS

LU series



Description

The LU series are the perfect pump series for delicate, viscous and particle-laden fluids in biotechnology, pharmaceutical manufacture, high technology food processes and all applications where the very highest hygienic standards are required. Special features such as the front mounted shaft seals, the external rotor fixing, the hygienic end cover, and the gasket type joints make this pump perfectly cleanable.

Technical details

Model	LU42	LU44	LU52	LU54	LU62	LU64
Max. flow (l/min)	123	204	265	455	461	685
Displacement (l/100 rev)	12,3	20,4	26,5	45,5	64	95
Pressure (bar)	15	8	15	8	15	8
Ports (mm)	25	38	38	50	65	80
Max. speed (rpm)	1000	1000	1000	1000	720	720
Bareshaft Weight (kg)	20	24	38	41	70	75
Temp. (°C)	-30 to 140 degrees					
Viscosity (cP)	1 to 1 million					

Technical specifications

Materials wetted parts	Stainless steel 316L
Seal configuration	Single, single flushed, double mechanical seal
Available material oring	FKM , EPDM , FEP encapsulated FKM
Connections	DIN11851, SMS , RJT , IDF , BSP-Male , Tri Clam
Mounting position	Vertical (horizontal optional)
Surface finish (µm)	Pharma quality, internal welds hand polished to 0,5
Certificates & legislation	EN1935-2004, FDA and 3A

PACKO LOBE PUMPS

LU series



Key features

Aseptic operation

All unwanted micro-organisms are kept out of the fluid stream. This prevents spoiling of sensitive products and ensures that only the intended reactions take place in the process. High specification joints are used: Once the system has been cleaned and sterilized it will remain clean and sterilized.

High containment

Escape of pathogenic or other hazardous products is prevented by the specially developed pump head joints. Optional: steam or sterile fluid barriers.

High Hygiene

FDA listed materials maintain hygiene inside and smooth contoured externals make the outside of the pump very easy to clean.

Low product damage

The special rotor shape of this series have been designed to ensure that the integrity of product structure, both microbial and particulate, is maintained.

No hold up of product

The modified rotor bores and vertical ports allow the pump head to completely self-drain, ensuring that expensive product is not retained in the system, that cleaning and sterilization is complete and that there is no cross-contamination between product batches.

Certifications

3A, FDA, 1935-2004 EC



Find your local supplier at www.verderliquids.com

For construction, installation and floor mounting drawings please contact your local authorised distributor.

